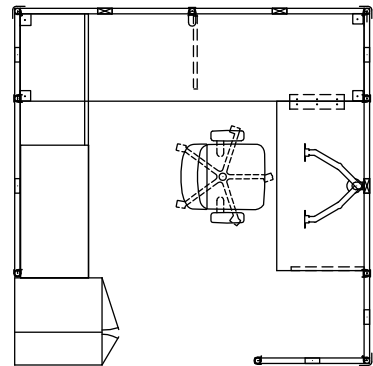




Footprint: 8' x 8'

Overview: Open Shelving
Double Lateral Top
Worksurface Supporting Lateral
Tower Storage
Boost Monitor Arm
Icon



Item	Part Number	Part Description	Qty	List	Ext List
EQUITY					
1	EB1C20L	Cantilever, Left Hand, 20" <i>Black</i>	1	\$90.00	\$90.00
2	EB1C20R	Cantilever, Right Hand, 20" <i>Black</i>	1	\$90.00	\$90.00
3	EB1F24	Flat Bracket, 24" <i>Black</i>	1	\$45.00	\$45.00
4	EB1PWSP	Panel-to-Worksurface Bracket, Left & Right Pair <i>Black</i>	2	\$29.00	\$58.00
5	EP3AOPG2415	Add-On Screen, 24Wx15H, Plexiglass 301 CL <i>PAINT: Champagne</i> <i>PLEXI: Clear</i>	3	\$732.00	\$2,196.00
6	EP3AOPG3015	Add-On Screen, 30Wx15H, Plexiglass 301 CL <i>PAINT: Champagne</i> <i>PLEXI: Clear</i>	1	\$772.00	\$772.00
7	EP3AOPG4815	Add-On Screen, 48Wx15H, Plexiglass 301 CL <i>PAINT: Champagne</i> <i>PLEXI: Clear</i>	4	\$991.00	\$3,964.00
8	EP3FA2449K	Fabric Panel, with knockouts, 24Wx49H, Beveled Top 301 F2671 <i>PAINT: Champagne</i> <i>FABRIC: Sprite (GrA)</i>	3	\$665.00	\$1,995.00
9	EP3FA3049K	Fabric Panel, with knockouts, 30Wx49H, Beveled Top 301 F2671 <i>PAINT: Champagne</i> <i>FABRIC: Sprite (GrA)</i>	1	\$715.00	\$715.00
10	EP3FA4849K	Fabric Panel, with knockouts, 48Wx49H, Beveled Top 301 F2671 <i>PAINT: Champagne</i> <i>FABRIC: Sprite (GrA)</i>	4	\$885.00	\$3,540.00
11	EP3P49E	Post Assembly, End, 49H 301 <i>PAINT: Champagne</i>	2	\$175.00	\$350.00
12	EP3P49L	Post Assembly, 90 Deg. "L", 49H 301 <i>PAINT: Champagne</i>	3	\$160.00	\$480.00
13	EP3P49S	Post Assembly, Straight, 49H 301 <i>PAINT: Champagne</i>	4	\$159.00	\$636.00

Item	Part Number	Part Description	Qty	List	Ext List
EQUITY					
14	EW14824G2	Worksurface, Rectangular, EW1, 48Wx24D, Scallop (grommet 2)	1	\$512.00	\$512.00
	<i>PW-STK</i>	<i>LAMINATE: Studio Teak</i>			
	<i>EB-STK</i>	<i>EDGE BANDS: Studio Teak</i>			
15	EW19624G2	Worksurface, Rectangular, EW1, 96Wx24D, Scallop (grommet 2)	1	\$749.00	\$749.00
	<i>PW-STK</i>	<i>LAMINATE: Studio Teak</i>			
	<i>EB-STK</i>	<i>EDGE BANDS: Studio Teak</i>			
				Sub-Total	\$16,192.00
STORAGE					
16	LT72	Double 36"W lateral top	1	\$485.00	\$485.00
	<i>SW-STA</i>	<i>LAMINATE: Sterling Ash</i>			
17	SWSLAT236J	2 DRAWER LATERAL, 36"W, J Pull Handle, Work Surface Supporting	1	\$997.00	\$997.00
18	SLATS136	36W Box/File Open Shelf Lateral Metal Top	1	\$998.00	\$998.00
	<i>301</i>	<i>TRIM: Champagne</i>			
19	STWR4624BBFLJ	Left open 46" Tower, BBF, J Pull Handle	1	\$2,362.00	\$2,362.00
	<i>301</i>	<i>TRIM: Champagne</i>			
				Sub-Total	\$4,842.00
ELECTRICAL					
20	EE1C48-8	Conduit Jumper, 8-Wire, 41-1/2L, E Series	1	\$141.00	\$141.00
21	EE1C72-8	Conduit Jumper, 8-Wire, 65-1/2L, E Series	1	\$170.00	\$170.00
22	EE1R1	Duplex Receptacle, Circuit #1, E Series	2	\$50.00	\$100.00
23	EE1R4D	Duplex Receptacle, Circuit #4, E Series, Dedicated for 3+1,2+2,3+3	1	\$50.00	\$50.00
24	EE1TB-8	Terminal Block, 8-Wire, E Series	3	\$56.00	\$168.00
				Sub-Total	\$629.00

Item	Part Number	Part Description	Qty	List	Ext List
WORKPLACE ACCESORIES					
25	KCG-110DS	Boost monitor dual arm, silver	1	\$917.00	\$917.00
			Sub-Total		\$917.00
<hr/>					
SEATING					
26	ICON4653	Mesh Back, Medium Upholstered Seat, Knee-tilt mech, No Arms	1	\$787.00	\$787.00
			Sub-Total		\$787.00
<hr/>					
				GRAND TOTAL	\$23,367.00