

NEUTRALPOSTURE NP

PANEL COLLECTION

MAYER
FABRICS

BLUEPRINT — GR A



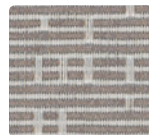
168-007
Alabaster



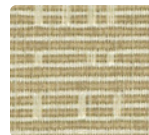
168-006
Petwet



168-017
Stone



168-000
Tuape



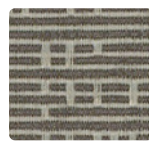
168-002
Chamois



168-003
Spring



168-004
Dusk



168-016
Flint



168-007
Alabaster

CIPHER — GR A



169-017
Brulee



169-002
Camel



169-003
Reseda



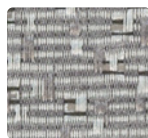
169-004
Lake



169-006
Nickel



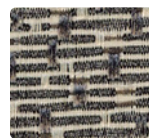
169-007
Almond



169-016
Metal



169-017
Brulee

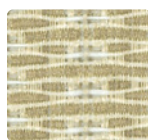


169-026
Raven

CODE — GR A



171-002
Sumac



171-002
Sumac



171-003
Beryl



171-004
Cadet



171-006
Aluminum



171-007
Bisque



171-016
Cement

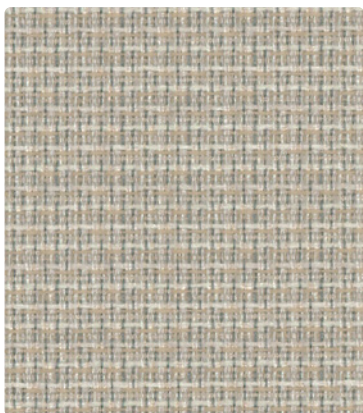


171-017
Mocha



171-026
Jet

GRAPH — GR A



170-007
Oyster



170-003
Sea



170-004
Twilight



170-006
Zinc



170-007
Oyster



170-016
Fog



170-017
Biscuit

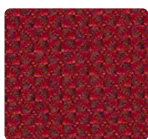


170-026
Silver

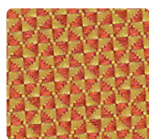


170-027
Tan

QUATTRO — GR B



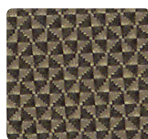
300-001
Crimson



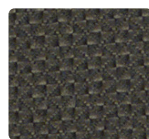
300-019
Golden Orange



300-007
Chalk



300-016
Khaki

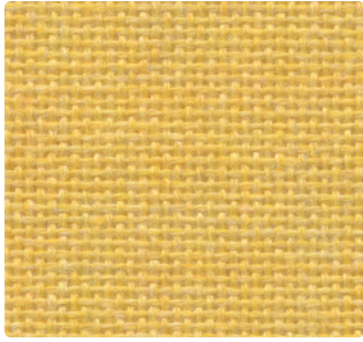


300-006
Granite



300-036
Pumice

EQUAL — GR B



EQ744
Yellow



EQ403
Vanilla Neutral



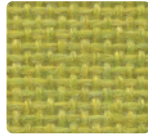
EQ402
Green Neutral



EQ539
Blue Papier



EQ795
Flannel



EQ734
Chartreuse



EQ721
Lime

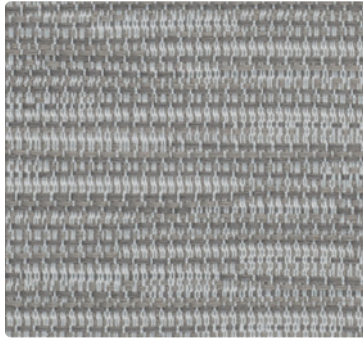


EQ742
Teal



EQ745
Sapphire

STRATA — GR B



164-000
Bark



164-003
Patina



164-004
Horizon



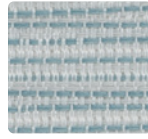
164-006
Zinc



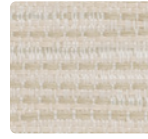
164-007
Ecru



164-010
Cliff



164-014
Cerulean

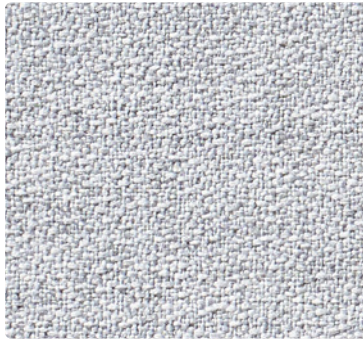


164-017
Raffia

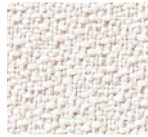


164-020
Pumice

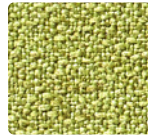
DIVERT — GR B



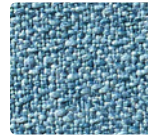
172-036
Aluminum



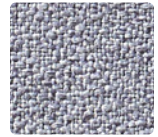
172-017
Eggshell



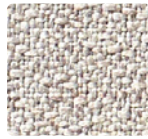
172-013
Jungle



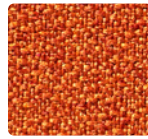
172-024
Bayberry



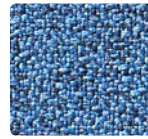
172-026
Grey



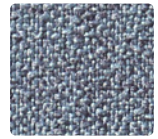
172-000
Earth



172-019
Orange



172-004
Cobalt

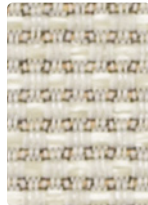


172-016
Storm

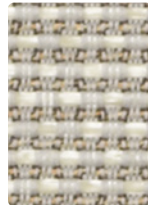
LUMINARY — GR B



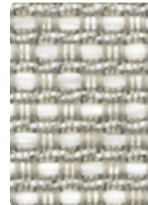
100-006
Pewter



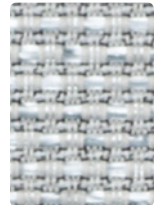
100-007
Parchment



100-017
Quartz



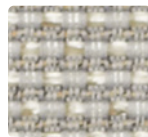
100-003
Patina



100-014
Blue Mist



100-009
Raffia



100-010
Driftwood



100-000
Earth

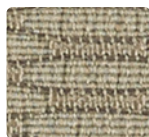


100-004
Sky

ECHO — GR E



388-002
Chrome Yellow



388-017
French Beige



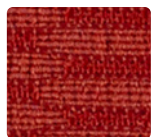
388-010
Smokey Taupe



388-006
Ebony



388-004
Cobalt



388-001
Vermillion

TECHNICAL INFORMATION

Panel Collection | Interactive Card

Pattern 66"	Content and Backing	Certifications	Weight/ Linear Yd.	Pattern Repeat	Finish	Lightfastness	Flammability	Cleaning Code
BLUEPRINT <i>Directional</i>	100% Recycled Polyester (65% Pre-/35% Post-Consumer) Backing: Acrylic	GREENGUARD Gold	10.368 oz.	8.5" H, 33.103" V Non-Matching	None	40 hours	ASTM E84 (Unadhered) Class 1 or A Cal. 117-2013 NFPA 260/UFAC Class 1	WS, BC
CIPHER <i>Directional</i>	100% Recycled Polyester (65% Pre-/35% Post-Consumer) Backing: Acrylic	GREENGUARD Gold	9.872 oz.	0.063" H, 0.063" V	None	40 hours	ASTM E84 (Unadhered) Class 1 or A Cal. 117-2013 NFPA 260/UFAC Class 1	WS, BC
CODE <i>Directional</i>	91% Recycled Polyester (59% Pre-/32% Post-Consumer), 9% Polyester Backing: Acrylic	GREENGUARD Gold	10.176 oz.	0.854" H, 0.188 V	None	40 hours	ASTM E84 (Unadhered) Class 1 or A Cal. 117-2013 NFPA 260/UFAC Class 1	WS, BC
DIVERT <i>Directional</i> <i>Multi-use⁺</i>	75% Post-Consumer Polyester, 25% Polyester Backing: None	GREENGUARD Gold	16.2 oz.	None	None	40 hours	ASTM E84 (Unadhered) Class 1 or A Cal. 117-2013 NFPA 260/UFAC Class 1	W
ECHO <i>Directional</i> <i>Multi-use⁺</i>	96% Recycled Polyester (82% Post-14% Pre-Consumer), 4% Polyester Backing: None	GREENGUARD Gold	14.83 oz.	0.8125" H, 0.25" V	None	60 hours	ASTM E84 (Unadhered) Class 1 or A Cal. 117-2013 NFPA 260/UFAC Class 1	WS
EQUAL	100% Post-Consumer Recycled Polyester Backing: None	GREENGUARD Gold, Facts Silver	16 oz.	None	None	40 hours	ASTM E84 (Unadhered) Class 1 or A	WS
GRAPH <i>Directional</i>	72% Recycled Polyester (47% Pre-/25% Post-Consumer), 28% Polyester Backing: Acrylic	GREENGUARD Gold	10.624 oz.	0.375" H, 0.25" V	None	40 hours	ASTM E84 (Unadhered) Class 1 or A Cal. 117-2013 NFPA 260/UFAC Class 1	WS, BC
LUMINARY <i>Directional</i>	63% Recycled Polyester (60% Pre-/3% Post-Consumer), 37% Polypropylene Backing: None	GREENGUARD Gold	10.6 oz.	Non-Matching	Polyester Binder	60 hours	ASTM E84 (Unadhered) Class 1 or A	WS
QUATTRO <i>Directional</i> <i>Multi-use⁺</i>	100% Polyester Backing: Acrylic	GREENGUARD Gold	13.06 oz.	Non- Matching	Stain Repellent	237,000 [^] Double Rubs	Cal. 117-2013 NFPA 260/UFAC Class 1 ASTM E84 (Unadhered) Class 1 or A IMO A.652(16)8.2	S
STRATA <i>Directional</i>	100% Post-Consumer Recycled Polyester Backing: None	GREENGUARD Gold	10 oz.	7" H, 8.875" V Non-Matching	None	40 hours	ASTM E84 (Unadhered) Class 1 or A	WS

REDUCED ENVIRONMENTAL IMPACT

These products are GREENGUARD Gold Certified for low chemical and particle emissions to UL standard UL 2818 and may contribute to LEED certification.

No FR/Antibacterial/Antimicrobial Additives

CARE AND CLEANING INFORMATION

S: Solvent W: Water-Based Cleaner WS: Water/Solvent Cleaner

BC: Bleach Cleanable – 1 part bleach, 9 parts water = 10% bleach, 90% water solution. Do not clean/disinfect fabric for longer than 10 minutes using the 10% bleach solution. Always rinse promptly with clean water after applying the bleach solution. Failure to do so will void any and all warranties.

DYE TRANSFER DISCLAIMER

Certain clothing and accessory dyes (such as those used on denim jeans) may migrate to lighter colors. This phenomenon is increased by humidity and temperature and is irreversible. Mayer Fabrics will not assume responsibility for dye transfer caused by external contaminants. Please check compatibility when using this product in combination with painted or varnished surfaces.

ADDITIONAL INFORMATION

[^] Abrasion test results exceeding ACT Performance Guidelines are not an indicator of product lifespan. Multiple factors affect fabric durability and appearance retention.

⁺ A multi-use fabric that can be used for upholstery, panels, wrapped walls, and acoustic.

Warranty: Please refer to the Mayer website for warranty information by pattern.

Custom Colors: All patterns can be custom colored. Minimum yardage applies.

Digital Swatch Card Color Matching: Due to color variations on different monitors and color printers, actual swatch colors may vary slightly. Please request a memo sample from Mayer Fabrics to ensure proper color representation.

Complete and current product information available at mayerfabrics.com.

MAYER FABRICS