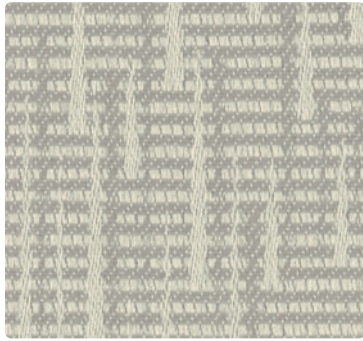


NEUTRALPOSTURE NP

SEATING COLLECTION

MAYER
FABRICS

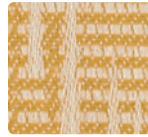
RUMBA — GR 2



462-006
Abalone



462-007
Bisque



462-002
Butterscotch



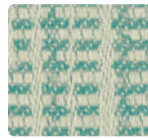
462-017
Fossil



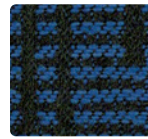
462-016
Char



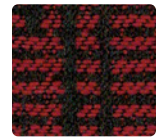
462-003
Lime



462-013
Spa



462-004
Cobalt



462-001
Cardinal

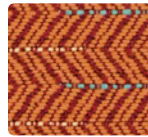
JIVE — GR 3



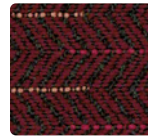
461-007
Alabaster



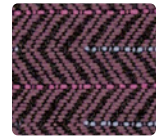
461-017
Stone



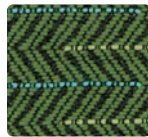
461-009
Mango



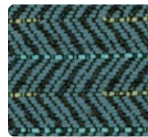
461-001
Bordeaux



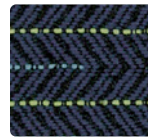
461-005
Aubergine



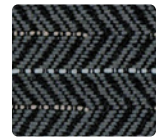
461-003
Emerald



461-014
Aegean

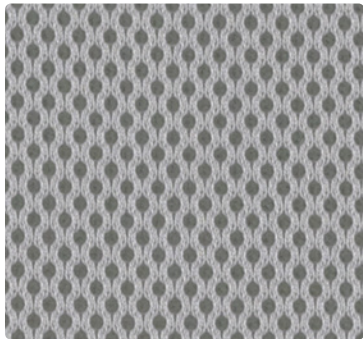


461-004
Midnight



461-006
Smoke

SPACER — GR 3



301-026
Sterling



301-013
Limelight



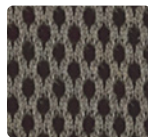
301-034
Caribbean



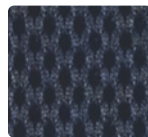
301-019
Marigold



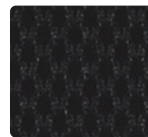
301-011
Paprika



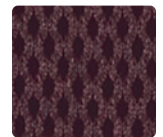
301-000
Mocha



301-004
Ink



301-006
Black



301-001
Wine

TANGO — GR 3



460-006
Flint



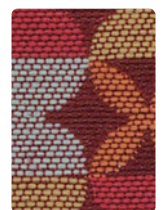
460-007
Camel



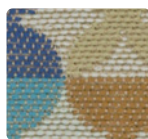
460-002
Sunrise



460-011
Coral



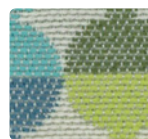
460-001
Sangria



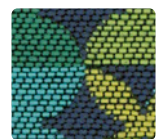
460-024
Surfside



460-004
Skyline



460-013
Limeade



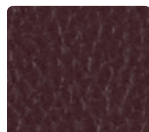
460-014
Harbor

GR 1

RANCHERO —



RC-001
Lipstick



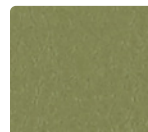
RC-008
Brandy



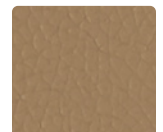
RC-014
Navy



RC-004
Sapphire

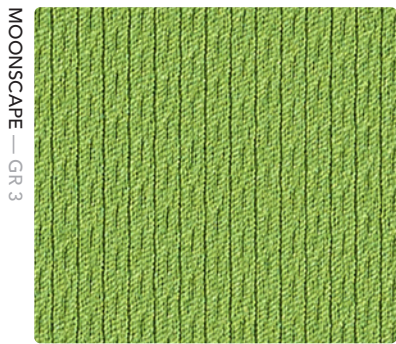


RC-003
Basil

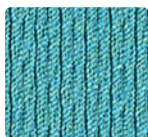


RC-007
Ecru

Additional colors are available. Please refer to the Mayer Fabrics website.



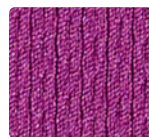
333-023
Grass



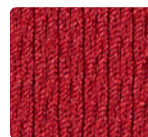
333-024
Teal



333-014
Cobalt



333-005
Mulberry



333-001
Flame



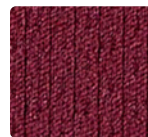
333-007
Pumice



333-010
Mocha



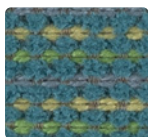
333-000
Bark



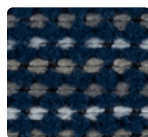
333-011
Ruby



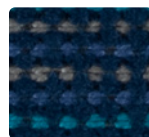
329-003
Spring



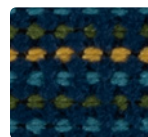
329-013
Jungle



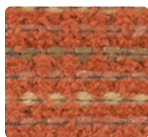
329-004
Ink



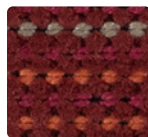
329-024
Marine



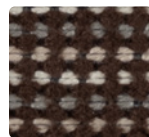
329-014
Grotto



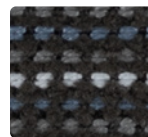
329-009
Tangelo



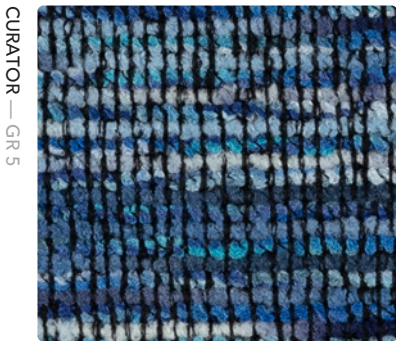
329-021
Sangria



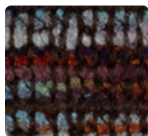
329-010
Earth



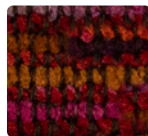
329-016
Cinder



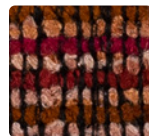
WC921-004
Ink



WC921-005
Mulberry



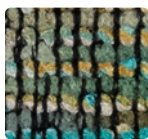
WC921-001
Ruby



WC921-008
Rhubarb



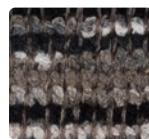
WC921-002
Umber



WC921-013
Juniper



WC921-006
Cloud



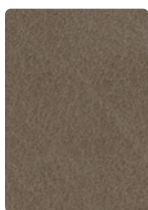
WC921-016
Metal



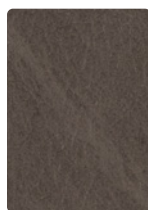
WC921-026
Onyx



OM-002
Khaki



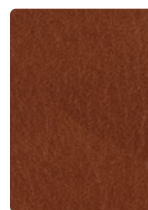
OM-000
Mushroom



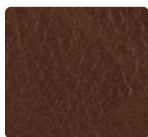
OM-020
Taupe



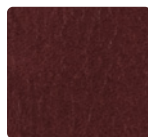
OM-010
Tungsten



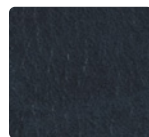
OM-009
Clay



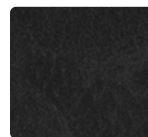
OM-040
Whiskey



OM-001
Oxblood



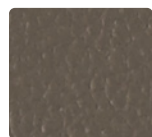
OM-014
Midnight



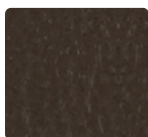
OM-026
Onyx



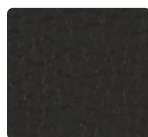
RC-020
Driftwood



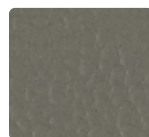
RC-010
Greige



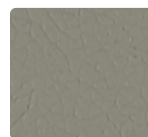
RC-000
Chocolate



RC-006
Black



RC-026
Slate



RC-036
Nickel

Additional colors are available. Please refer to the Mayer Fabrics website.

TECHNICAL INFORMATION

Seating Collection | Interactive Card

Pattern 54"	Content and Backing	Certifications	Weight/ Linear Yd.	Pattern Repeat	Finish	Abrasion Wyzenbeek	Light- Fastness	Flammability	Cleaning Code
CASPIAN <i>Directional</i>	76% Polyester, 24% SEAQUAL® YARN (Post-Consumer Recycled Polyester) Backing: Acrylic	GREENGUARD Gold	17.89 oz.	.125" H, 2.5" V	Stain Repellent - PFAS Free	80,000 [^] Double Rubs	40 hours	Cal. 117-2013 NFPA 260/UFAC Class 1	WS, BC
CURATOR <i>Directional</i>	100% Polyester, 12% Nylon Backing: Crypton®	GREENGUARD Gold	18.6 oz.	Random Match	Crypton® with Antimicrobial Silver Ion Technology	100,000 [^] Double Rubs	40 hours	Cal. 117-2013 NFPA 260/UFAC Class 1	C, W, BC
JIVE <i>Directional</i>	100% Polyester Backing: Acrylic	GREENGUARD Gold	12.43 oz.	1.2" H, 0.4" V	Stain Repellent - PFOA & PFOS Free	82,000 [^] Double Rubs	40 hours	Cal. 117-2013 NFPA 260/UFAC Class 1	S
MOONSCAPE <i>Directional</i>	100% Post-Consumer Recycled Polyester Backing: None	GREENGUARD Gold	13.5 oz.	0.25" H, 0.25" V	None	378,000 [^] Double Rubs	40 hours	Cal. 117-2013 NFPA 260/UFAC Class 1	WS
OMEGA	43% Polyurethane Polycarbonate - face, 57% Polyester backing	GREENGUARD	25.4 oz.	None	WRITE AWAY® - Soil & Stain Resistant Top Coat with Ink Resistant Technology	250,000 [^] Double Rubs	200 hours	Cal. 117-2013 NFPA 260/UFAC Class 1	WS, BC, CFC
RANCHERO	85% Vinyl face, 15% Polyester backing	GREENGUARD	24.5 oz.	None	None	250,000 [^] Double Rubs	200 hours	Cal. 117-2013 NFPA 260/UFAC Class 1	W, BC, CFC
RUMBA <i>Directional</i>	100% Polyester Backing: Acrylic	GREENGUARD Gold	10.97 oz.	3.7" H, 6.625" V Random Match	Stain Repellent - PFOA & PFOS Free	55,000 [^] Double Rubs	40 hours	Cal. 117-2013 NFPA 260/UFAC Class 1	S
SPACER MESH <i>Directional</i>	100% Polyester Backing: None	GREENGUARD Gold	16 oz.	Non- Matching	None	1,002,000 [^] Double Rubs	40 hours	Cal. 117-2013 NFPA 260/UFAC Class 1 ASTM E84 (Unadhered) Class 1 or A FMVSS 302	WS
TANGO <i>Directional</i>	100% Polyester Backing: Acrylic	GREENGUARD Gold	17.27 oz.	4.8" H, 4.8" V	Stain Repellent - PFOA & PFOS Free	80,000 [^] Double Rubs	40 hours	Cal. 117-2013 NFPA 260/UFAC Class 1	S

REDUCED ENVIRONMENTAL IMPACT

These products are GREENGUARD Gold Certified for low chemical and particle emissions to UL standard UL 2818 and may contribute to LEED certification.

No FR Additives

No Antibacterial/Antimicrobial Additives
Caspian, Jive, Moonscape, Omega, Ranchero,
Rumba, Spacer Mesh, Tango

PFAS Free

Caspian, Curator, Moonscape,
Omega, Ranchero, Spacer Mesh

CARE AND CLEANING INFORMATION

S: Solvent W: Water-Based Cleaner WS: Water/Solvent Cleaner

C: Crypton Cleaning

BC: Bleach Cleanable – 1 part bleach, 9 parts water = 10% bleach, 90% water solution. Do not clean/disinfect fabric for longer than 10 minutes using the 10% bleach solution. Always rinse promptly with clean water after applying the bleach solution. Failure to do so will void any and all warranties.

DYE TRANSFER DISCLAIMER

Certain clothing and accessory dyes (such as those used on denim jeans) may migrate to lighter colors. This phenomenon is increased by humidity and temperature and is irreversible. Mayer Fabrics will not assume responsibility for dye transfer caused by external contaminants. Please check compatibility when using this product in combination with painted or varnished surfaces.

ADDITIONAL INFORMATION

[^] Abrasion test results exceeding ACT Performance Guidelines are not an indicator of product lifespan. Multiple factors affect fabric durability and appearance retention.

[†] A multi-use fabric that can be used for upholstery, panels, wrapped walls, and acoustic.

Warranty: Please refer to the Mayer website for warranty information by pattern.

Custom Colors: All patterns can be custom colored. Minimum yardage applies.

Digital Swatch Card Color Matching: Due to color variations on different monitors and color printers, actual swatch colors may vary slightly. Please request a memo

MAYER FABRICS