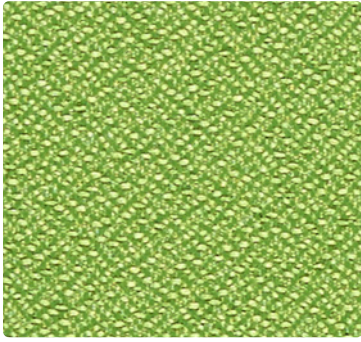


# NEUTRALPOSTURE NP

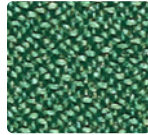
SEATING & PANEL COLLECTION

**MAYER**  
FABRICS

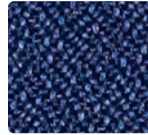
FORTE — GR 1/A



298-053  
Grass



298-043  
Hedge



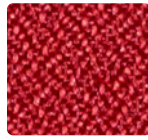
298-004  
Cadet



298-006  
Tuxedo



298-036  
Char



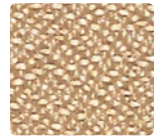
298-001  
Rouge



298-011  
Port

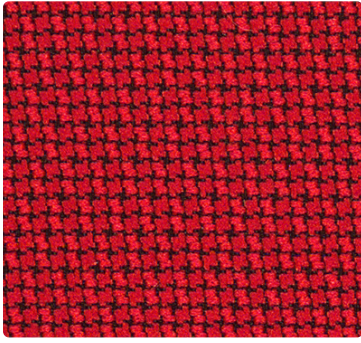


298-000  
Fudge



298-027  
Oatmeal

CROSS CHECK — GR 2/B



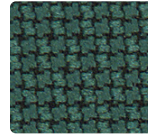
299-021  
Red Baron



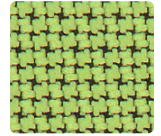
299-001  
Cranberry



299-011  
Vermillion



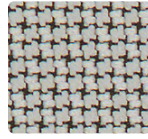
299-013  
Malachite



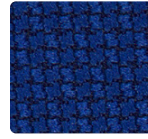
299-003  
Lime



299-002  
Sunshine



299-036  
Dove

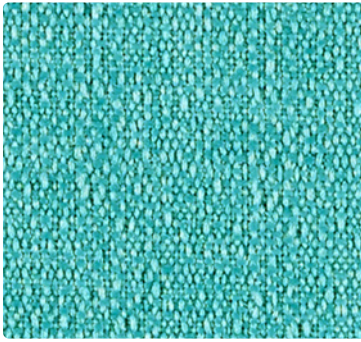


299-024  
Blue Ribbon

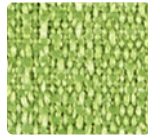


299-006  
Slate Black

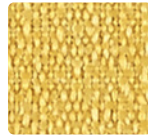
CONTINUUM 10 — GR 2/B



422-034  
Turquoise



422-003  
Spring



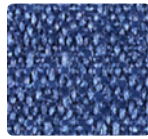
422-002  
Saffron



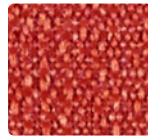
422-007  
Cafe Au Lait



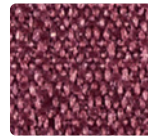
422-000  
Espresso



422-004  
Indigo



422-001  
Lipstick

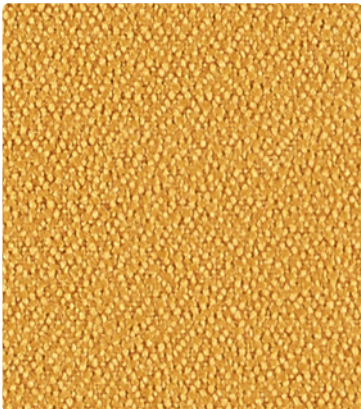


422-008  
Beet

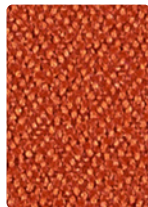


422-006  
Onyx

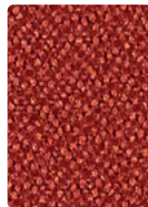
FOUNDATION 10 — GR 2/B



350-032  
Ochre



350-039  
Tangelo



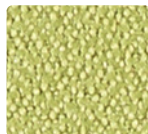
350-031  
Rouge



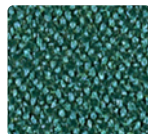
350-011  
Flame



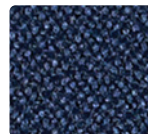
350-009  
Cayenne



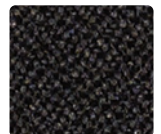
350-113  
Celery



350-064  
Ocean

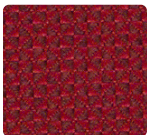


350-004  
Sapphire

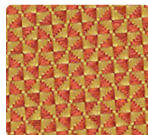


350-006  
Ebony

QUATTRO — GR 2/B



300-001  
Crimson



300-019  
Golden Orange



300-007  
Chalk



300-016  
Khaki



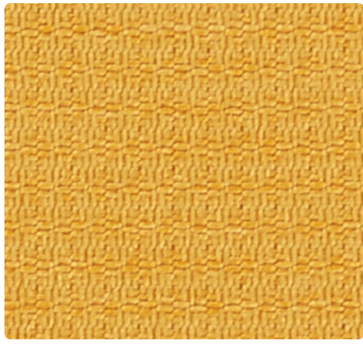
300-006  
Granite



300-036  
Pumice



PRISM 10 — GR 2/B



426-002  
Topaz



426-009  
Clementine



426-001  
Lipstick



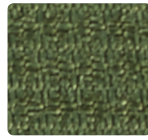
426-011  
Claret



426-008  
Raisin



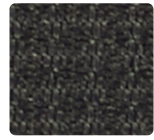
426-013  
Olive



426-023  
Asparagus

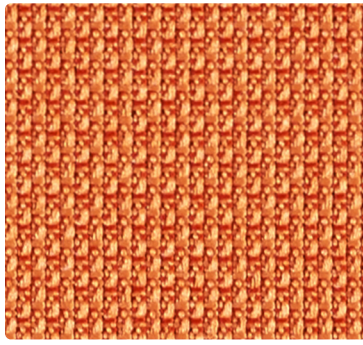


426-016  
Charcoal

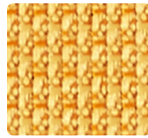


426-006  
Onyx

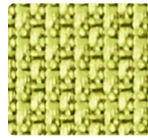
OPTIC 10 — GR 2/B



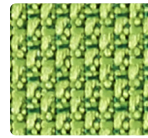
424-009  
Sunrise



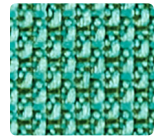
424-019  
Tangerine



424-013  
Green Apple



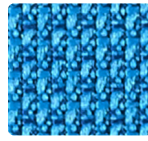
424-023  
Springtime



424-033  
Myrtle



424-001  
Red



424-024  
Ocean

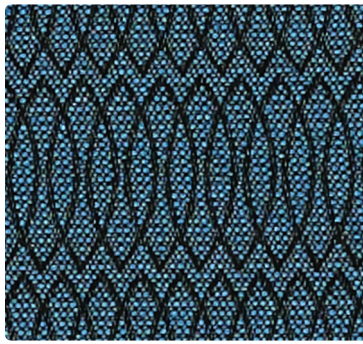


424-000  
Brown Bear



424-006  
Ash

REVERB — GR 3/C



421-004  
Marine



421-009  
Tangelo



421-001  
Garnet



421-007  
Taupe



421-000  
Granite

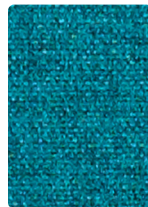
FEDORA — GR 4/D



621-013  
Citron



621-003  
Cactus



621-053  
Aegean



621-014  
Indigo



621-016  
Charcoal



621-002  
Topaz



621-019  
Tangelo



621-001  
Ruby

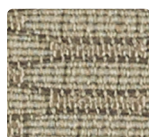


621-006  
Bitumen

ECHO — GR 5/E



388-002  
Chrome Yellow



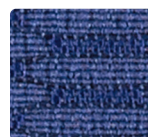
388-017  
French Beige



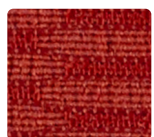
388-010  
Smokey Taupe



388-006  
Ebony



388-004  
Cobalt



388-001  
Vermillion

# TECHNICAL INFORMATION

## Seating & Panel Collection | Interactive Card

| Pattern 54"   | Content and Backing   | Certifications  | Weight/<br>Linear Yd. | Pattern<br>Repeat     | Finish                                | Abrasion<br>Wyzenbeek                 | Light-<br>Fastness | Flammability   | Cleaning<br>Code |
|---|---|-----------------|-----------------------|-----------------------|---------------------------------------|---------------------------------------|--------------------|--|------------------|
| <b>CONTINUUM10</b><br><i>Directional</i><br><i>Multi-use</i> <sup>+</sup> | 100% Post-Consumer Recycled Polyester<br>Backing: Latex                                 | GREENGUARD Gold | 15 oz.                | 0.5" H,<br>0.59" V    | Stain Repellent -<br>PFOA & PFOS Free | 130,000 <sup>^</sup><br>Double Rubs   | 40 hours           | Cal. 117-2013<br>NFPA 260/UFAC Class 1<br>ASTM E84 (Unadhered)<br>Class 1 or A                     | WS               |
| <b>CROSS CHECK</b><br><i>Multi-use</i> <sup>+</sup>                       | 100% Polyester<br>Backing: Acrylic  | GREENGUARD Gold | 10.71 oz.             | Non-<br>Matching      | Stain Repellent                       | 258,000 <sup>^</sup><br>Double Rubs   | 40 hours           | Cal. 117-2013<br>NFPA 260/UFAC Class 1<br>ASTM E84 (Adhered)<br>Class 2 or B                       | S                |
| <b>ECHO</b><br><i>Directional</i><br><i>Multi-use</i> <sup>+</sup>        | 96% Recycled Polyester<br>(82% Post-14% Pre-Consumer),<br>4% Polyester<br>Backing: None | GREENGUARD Gold | 14.83 oz.             | 0.8125" H,<br>0.25" V | None                                  | 70,000 <sup>^</sup><br>Double Rubs    | 60 hours           | Cal. 117-2013<br>NFPA 260/UFAC Class 1<br>ASTM E84 (Unadhered)<br>Class 1 or A                     | WS               |
| <b>FEDORA</b><br><i>Directional</i><br><i>Multi-use</i> <sup>+</sup>      | 100% Polyester<br>Backing: Polyester  | GREENGUARD Gold | 17.2 oz.              | None                  | Stain Repellent -<br>PFOA Free        | 100,000 <sup>^</sup><br>Double Rubs   | 40 hours           | Cal. 117-2013<br>NFPA 260/UFAC Class 1<br>ASTM E84 (Unadhered)<br>Class 1 or A                     | W                |
| <b>FORTE</b><br><i>Multi-use</i> <sup>+</sup>                             | 100% Polyester<br>Backing: Acrylic  | GREENGUARD Gold | 12.1 oz.              | None                  | Stain Repellent                       | 183,000 <sup>^</sup><br>Double Rubs   | 40 hours           | Cal. 117-2013<br>NFPA 260/UFAC Class 1<br>ASTM E84 (Adhered)<br>Class 2 or B                       | WS               |
| <b>FOUNDATION10</b><br><i>Multi-use</i> <sup>+</sup>                      | 100% Recycled Polyester<br>(65% Pre-/35% Post-Consumer)<br>Backing: None                | GREENGUARD Gold | 13 oz.                | None                  | Stain Repellent -<br>PFOA & PFOS Free | 1,000,000 <sup>^</sup><br>Double Rubs | 40 hours           | Cal. 117-2013<br>NFPA 260/UFAC Class 1<br>ASTM E84 (Unadhered)<br>Class 1 or A                     | WS               |
| <b>OPTIC10</b><br><i>Directional</i><br><i>Multi-use</i> <sup>+</sup>     | 83% Post-Consumer Recycled Polyester, 17% Polyester<br>Backing: Latex                   | GREENGUARD Gold | 16.5 oz.              | 0.33" H,<br>0.2" V    | Stain Repellent -<br>PFOA & PFOS Free | 185,000 <sup>^</sup><br>Double Rubs   | 40 hours           | Cal. 117-2013<br>NFPA 260/UFAC Class 1<br>ASTM E84 (Unadhered)<br>Class 1 or A                     | WS               |
| <b>PRISM10</b><br><i>Directional</i><br><i>Multi-use</i> <sup>+</sup>     | 75% Post-Consumer Recycled Polyester, 25% Polyester<br>Backing: Latex                   | GREENGUARD Gold | 14.5 oz.              | 0.17" H,<br>0.2" V    | Stain Repellent -<br>PFOA & PFOS Free | 105,000 <sup>^</sup><br>Double Rubs   | 40 hours           | Cal. 117-2013<br>NFPA 260/UFAC Class 1<br>ASTM E84 (Unadhered)<br>Class 1 or A                     | WS               |
| <b>QUATTRO</b><br><i>Directional</i><br><i>Multi-use</i> <sup>+</sup>     | 100% Polyester<br>Backing: Acrylic  | GREENGUARD Gold | 13.06 oz.             | Non-<br>Matching      | Stain Repellent                       | 237,000 <sup>^</sup><br>Double Rubs   | 40 hours           | Cal. 117-2013<br>NFPA 260/UFAC Class 1<br>ASTM E84 (Unadhered)<br>Class 1 or A<br>IMO A.652(16)8.2 | S                |
| <b>REVERB</b><br><i>Directional</i><br><i>Multi-use</i> <sup>+</sup>      | 100% Recycled Polyester<br>Backing: None  | GREENGUARD Gold | 9.3 oz.               | 0.375" H,<br>1.875" V | None                                  | 100,000 <sup>^</sup><br>Double Rubs   | 60 hours           | Cal. 117-2013<br>NFPA 260/UFAC Class 1<br>ASTM E84 (Unadhered)<br>Class 1 or A                     | WS, BC           |

### REDUCED ENVIRONMENTAL IMPACT

These products are GREENGUARD Gold Certified for low chemical and particle emissions to UL standard UL 2818 and may contribute to LEED certification.

No FR/Antibacterial/Antimicrobial Additives

### CARE AND CLEANING INFORMATION

S: Solvent      W: Water-Based Cleaner      WS: Water/Solvent Cleaner

BC: Bleach Cleanable – 1 part bleach, 9 parts water = 10% bleach, 90% water solution. Do not clean/disinfect fabric for longer than 10 minutes using the 10% bleach solution. Always rinse promptly with clean water after applying the bleach solution. Failure to do so will void any and all warranties.

### DYE TRANSFER DISCLAIMER

Certain clothing and accessory dyes (such as those used on denim jeans) may migrate to lighter colors. This phenomenon is increased by humidity and temperature and is irreversible. Mayer Fabrics will not assume responsibility for dye transfer caused by external contaminants. Please check compatibility when using this product in combination with painted or varnished surfaces.

### ADDITIONAL INFORMATION

<sup>^</sup>Abrasion test results exceeding ACT Performance Guidelines are not an indicator of product lifespan. Multiple factors affect fabric durability and appearance retention.

<sup>+</sup>A multi-use fabric that can be used for upholstery, panels, wrapped walls, and acoustic.

Warranty: Please refer to the Mayer website for warranty information by pattern.

Custom Colors: All patterns can be custom colored. Minimum yardage applies.

Digital Swatch Card Color Matching: Due to color variations on different monitors and color printers, actual swatch colors may vary slightly. Please request a

memo

sample from Mayer Fabrics to ensure proper color representation.

Complete and current product information available at [mayerfabrics.com](http://mayerfabrics.com).

# MAYER FABRICS